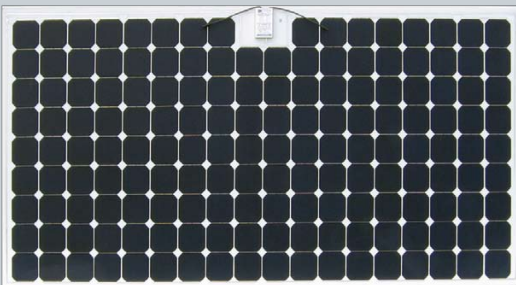


Applied Solar Roofing Membrane

Quiet And Reliable Power Generation



4 x 8 Module



4 x 4 Module



Applied Solar's BIPV Roofing Membrane is a unique product that maintains the natural look of your property while generating clean, safe, efficient electricity from the sun. The Solar BIPV Roofing Membrane product line is designed for commercial flat to low-slope roofs, integrating photovoltaic modules with single-ply roofing membranes.

(Continued on next page)



Applied Solar Roofing Membrane At-A-Glance

BENEFITS

- Reduces pollution and green house gas emissions
- Significantly reduces or eliminates monthly energy bill
- Provides a safe and secure sustainable energy solution
- Bank your extra power with the local utility
- A maintenance free, state-of-the-art system
- Add significant resale value to the property
- Maintains natural look and aesthetic appeal of the property

FEATURES

- High efficiency crystalline silicon PV cells
- A completely waterproof solar roof with no penetrations
- Class A fire rated, UV stabilized and low maintenance system
- Hail resistant, low profile, wind resistant design
- Wind load rated up to 125 mph
- Maximizes energy output by installing around roof obstructions

INSTALLATION

- 20-year warranty covers roof material and energy performance
- Installs over existing roofs, no demolition and disposal costs
- Light weight, easy and inexpensive to install
- No structural reinforcement of the roof typically required
- No complicated rack mounting hardware required
- Modular, fully scalable and expandable
- Approximately 2 lbs. per sq. ft. installed
- Approximately 10 watts per sq. ft. installed

WARRANTY

- 20-Year Warranty On 80% Power Output

CERTIFICATIONS

- Class A Fire Rated
- CSA certified to UL 1703
- 600 VDC
- FSEC Listed

TECHNICAL SPECIFICATIONS

Model	STP 400
Technology	Building-integrated Photovoltaic (BIPV)
Type of solar cell	Monocrystalline Silicon
Roofing applications	Commercial/residential, flat to a low slope; Maximum pitch of 2.5:12
Size of active solar area	48inx96in; 122cmx244cm
Membrane weight (active solar area)	20.9 kg 46 lb
Cell configuration	160 cells (2 parallel strings of 80 cells in series)
Thickness of membrane	8mm
Thickness of junction box	23mm
Total thickness of membrane + JB	31mm
Connector type	Tyco Integral Connector
Bypass diodes	Laminated; 4 embedded diodes
Warranty	20-Year on 80% Power Output
Certifications (approvals pending)	Class A fire rated, CSA certified to UL 1703, IEC61215, 1000VDC
Voc	49.2
Isc	10.4
Vmp	41.5
Imp	9.6
Pmax	400

Model	STP 200
Technology	Building-integrated Photovoltaic (BIPV)
Type of solar cell	Monocrystalline Silicon
Roofing applications	Commercial/residential, flat to a low slope; Maximum pitch of 2.5:12
Size of active solar area	48inx48in; 122cmx122cm
Membrane weight (active solar area)	10.5 kg 23 lb
Cell configuration	80 cells (1 series string)
Thickness of membrane	8mm
Thickness of junction box	23mm
Total thickness of membrane + JB	31mm
Connector type	Tyco Integral Connector
Bypass diodes	Laminated; 5 embedded diodes
Warranty	20-Year on 80% Power Output
Certifications (approvals pending)	Class A fire rated, CSA certified to UL 1703, IEC61215, 1000VDC
Voc	49.2
Isc	5.2
Vmp	41.5
Imp	4.8
Pmax	200