

Applied Solar 4ft Roofing Tile

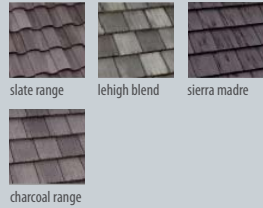
Aesthetically Pleasing , Beautifully Integrated and Easy to Install



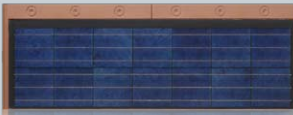
Slate Gray



Most Compatible Tiles



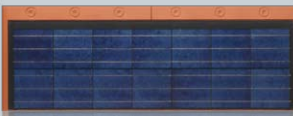
Brown



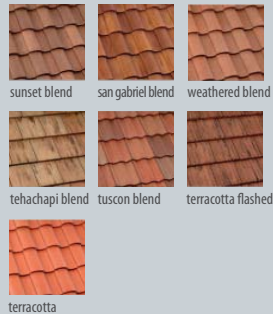
Most Compatible Tiles



Terracotta



Most Compatible Tiles



Applied Solar's Roofing Tile is a unique product that maintains the natural look of your property while generating clean, safe, efficient electricity from the sun. The Applied Solar Tile product line is designed for residential or commercial sloped roofs, and photovoltaic tiles integrate with many standard roofing materials.

Our roofing tiles are very competitively priced on an installed per watt basis, and can go on virtually anything with a sloped roof: re-roofs, retrofits or new home construction. Manufacturing of our tiles is done by Suntech, the world's largest solar module producer, so you're assured of the highest quality and performance reliability.

(Continued on next page)



Applied Solar 4ft Roofing Tile At-A-Glance

BENEFITS

- Provides quiet and reliable power generation
- Maintains natural look and aesthetic appeal of the home
- Reduces pollution and CO2 emissions
- Significantly reduces monthly energy bills
- Provides a safe, secure, and sustainable energy solution
- Low maintenance free, state-of-the-art system
- Adds significant resale value to the property

FEATURES

- Aesthetically pleasing and beautifully integrated
- Designed to integrate both with flat and S-Tile concrete roof systems
- Available in multiple colors to match roof colors
- Long term reliability and low maintenance costs
- Snow load capacity over 200 lbs per square foot
- Wind rated to 80 mph with standard installation. Higher wind ratings available with site-specific engineering
- Tested to 160 mph with site-specific installation techniques
- Light weight, safe, and easy to install
- Flashings kits provide ability to retrofit onto existing roofs
- Provides a waterproof roof with no exposed roof penetrations
- Installs in accordance with the Tile Roof Institute's (TRI) recommendations
- Free internet based solar system monitoring for 10 years
- Tile Warranty: 10 years for 90% power output, and 25 years for 80% power output and no water intrusion
- May be walked on by qualified roofing personnel

WARRANTY

- 25-Year Warranty On 80% Power Output

CERTIFICATIONS

- Class A Fire Rated
- CSA certified to UL 1703
- 600 VDC
- FSEC Listed

TECHNICAL SPECIFICATIONS

Product Description

High efficiency crystalline photovoltaic cells encapsulated in multi-layered lamination of glass, EVA, and Tedlar with polycarbonate frame.

Color Availability

Slate Gray, Brown, Terracotta; designed to integrate seamlessly with both flat and S tile concrete roof systems

Installation Weight

400 lbs. per 100 sq.ft., 14 lbs. per tile

Roofing Applications

New construction and retrofit; residential and commercial roofs; pitch 3:12 or greater

Actual Size

17.5" x 47" x 1"

Exposed Size

13.5" x 45" x 1"

Weight

14 lbs.

Connector Type

Multi contact M/F

Roofing Information

Head lap: 3.5 in. Exposure: 13.5 in.

Area per kWp (AC)

100 sq. ft.

Nominal Power (Pmax)

48 watts DC

Max Power Current (Imp)

7.25A

Max Power Voltage (Vmp)

7.0V

Short Circuit Current (Isc)

7.95A

Open Circuit Voltage (Voc)

8.61V

Bypass Diode

1 per tile

Max. System Voltage

600 Vdc

Operating Temperature

-40 to +160° F