

Sustainable
Stock Picks
of 2006

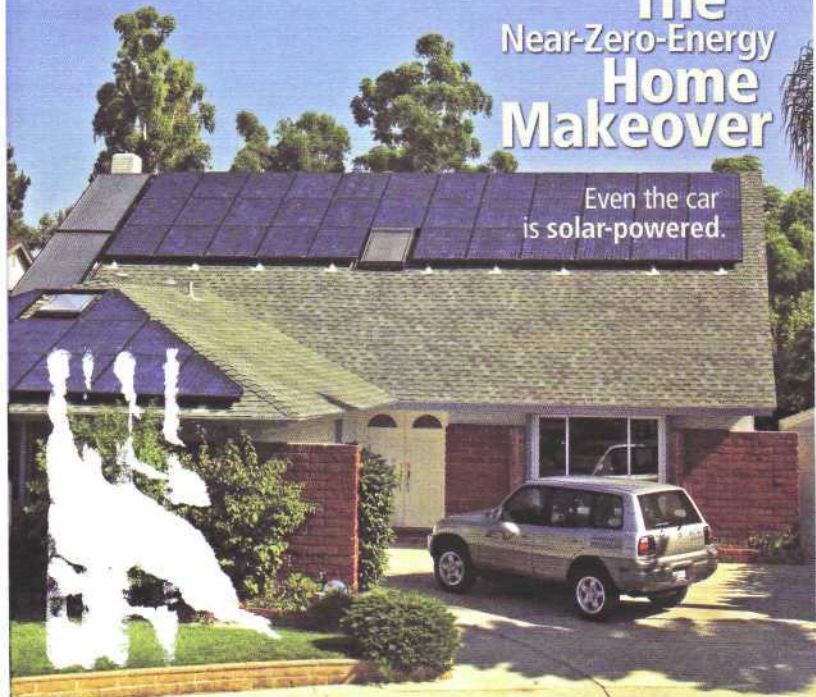
Cost-Competitive
Utility Solar
Power Ahead?

SOLAR TODAY

Living Green
on N Street

The Near-Zero-Energy Home Makeover

Even the car
is solar-powered.



Evelyn Pease Tyner Interpretive Center | Glenview, Ill.



Project: Open Energy Corp. in August installed its SolarSave roofing tiles at the Evelyn Pease Tyner Interpretive Center in Glenview, Ill., a learning shelter and exhibition space designed to tell the story of the prairie, the predominant pre-settlement ecosystem in Illinois. The 17.5-kilowatt roofing system covers 1,500 square feet — a third of the roof's total surface area. The environmentally friendly center — designed by Wight & Company (www.wightco.com) — has applied for Leadership in Energy and Environmental Design (LEED) Platinum Certification through the U.S. Green Building Council.

Features: The solar system comprises 490 building-integrated photovoltaic SolarSave roofing tiles by Open Energy (www.openenergy.com). The building also includes natural lighting, a geothermal heat pump for heating and cooling, passive ventilation and environmental materials such as wheat-straw paneling.

Benefits: The SolarSave system is designed to generate an estimated 1,800 kilowatt-hours per month and up to 20,000 kilowatt-hours per year, according to Open Energy.

The Evelyn Pease Tyner Interpretive Center features a 17.5-kilowatt roofing system comprising 490 SolarSave roofing tiles from Open Energy Corp.



Solar Pathfinder ASSISTANT

RAISING THE STANDARD IN SOLAR SITE ANALYSIS

• The Solar Pathfinder with its reflective properties gives an excellent "instant solar blueprint" of the prospective site. • The Solar Pathfinder Assistant software carries that shading information into a concise, thorough, professional-looking solar site analysis report in just seconds.

User-Friendly!

- No internet connection necessary (stand-alone software)
- Automatically adjusts for magnetic declination, latitude, etc.
- Allows for changes in azimuth, tilt angle & mode
- Can show "before/after" results of taking trees or obstructions out of site area
- Automatically does computations



Contact us!

www.solarpathfinder.com • info@solarpathfinder.com

The Fifty-Year History

of the International Solar Energy Society and its National Sections

Edited by Dr. Karl W. Boer

Regular Price \$180

ASES/ISES Member Price **\$75.00**

The two volume, hardbound set reviews the fifty year history of the development of solar energy and the role of the International Solar Energy Society (ISES). • Well researched historic



accounts by 45 leading solar energy experts from 35 countries are contained in the 500+ pages of each volume of the document.

American Solar Energy Society
2400 Central Avenue, Suite A • Boulder, CO, USA 80301
phone: 303.443.3130 • fax: 303.443.3212
ases@ases.org • www.ases.org