

Savoy Building

OVERVIEW

Applied Solar has introduced an element of multi-functionality to building integrated photovoltaic solutions, creating systems, which produce energy while meeting required needs and desirable features of urban buildings. The solution was Monocrystalline solar modules integrated with PVC single-ply roofing membranes. The roof on display in the photo below utilizes high-efficiency monocrystalline Sun Power cells currently available in the Applied Solar Roofing Membranes. This is a demonstration of how a lightweight, waterproof Applied Solar Roofing Membranes can be installed over any existing roof surface.

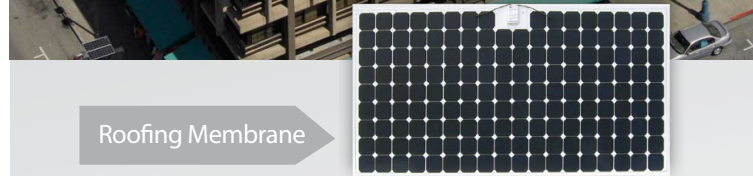
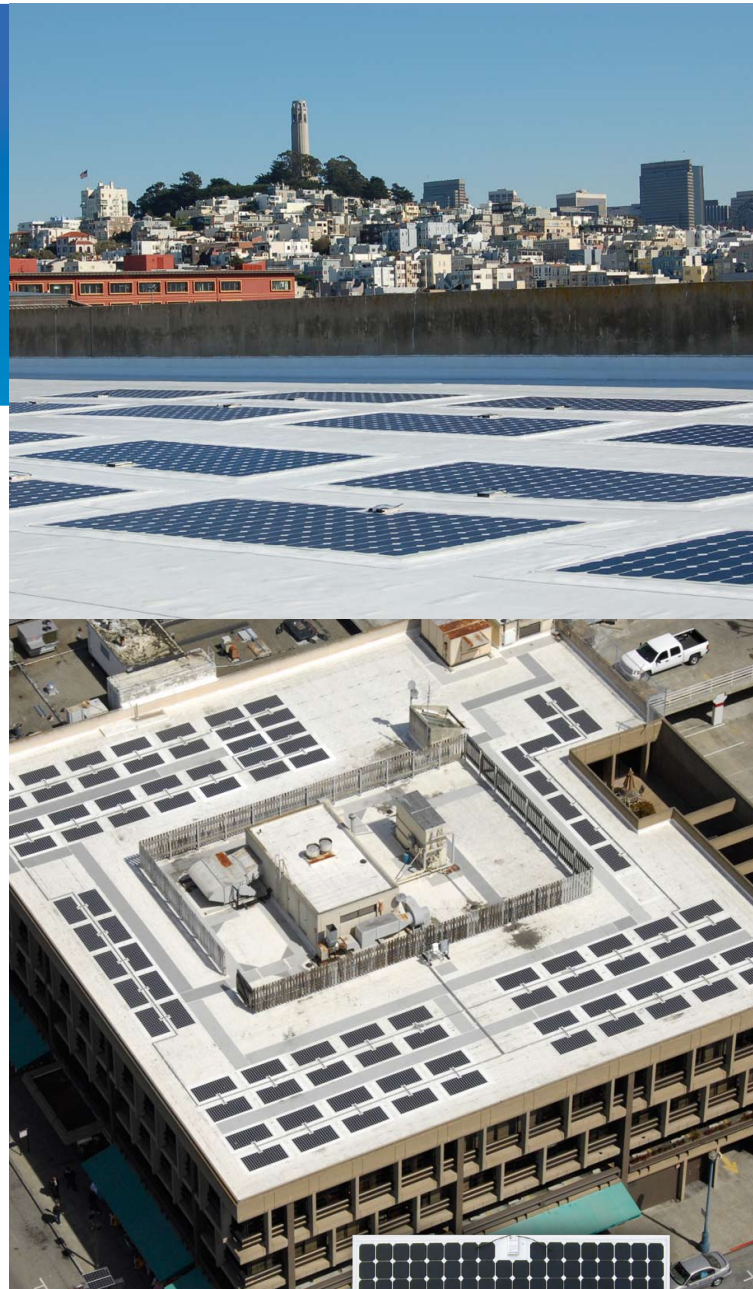
CUSTOMER TESTIMONIAL

End Customer Testimonial:

“We were looking to replace our roof, wanted to lower energy costs for our tenants and were interested in becoming an early adopter of a renewable energy source for future cost savings. So we not only got a new roof, but we also simultaneously got a new solar power system,” said Jeffrey Brueckner, Vice President of Operations for Savoy Commercial Properties.

Dealer Testimonial:

“The SP480 module is light and easy to install. Combined with the financial incentives of BIPV, it creates a compelling investment for a savvy property owner or manager.” - Jason Zvanut, Vice President of Integrated Power in Novato, CA.



Roofing Membrane

Full Address

Fisherman's Wharf, San Francisco, CA

Project Start Date October 2006

Project End Date December 2006

System Size

40 kW DC, 35 kW AC

Estimated Monthly Production

50 kWh

Products Used

Applied Solar Roofing Membrane – SP480

