

KTS Machine Shop

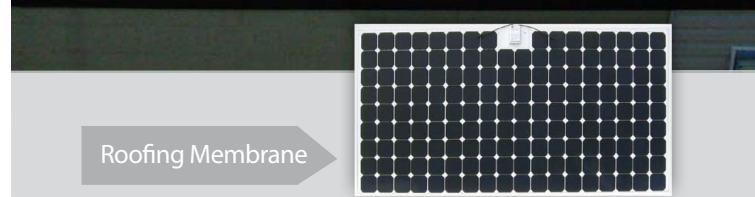
OVERVIEW

Roofing Membranes from Applied Solar deliver multi-functional to building integrated Photovoltaic solutions. OEC solutions produce electricity while serving as the roof itself and providing desired features of urban buildings. Applied Solar Roofing Membranes are solar modules integrated with single-ply roofing membrane. They use high efficiency SunPower™ cells providing a lightweight, waterproof roofing product and can be installed over any existing roof surface.

CUSTOMER TESTIMONIAL

Dealer Testimonial:

Bill Hoey, Managing Member of New Jersey Solar Power, LLC. stated: "BIPV has finally arrived with performance metrics that are competitive with Fixed Panel Installations".



Roofing Membrane

Project Info

KTS wanted to eliminate the electric bill for their over 3,500 sq. ft. machine shop. Due to the shading from the upper to the lower roof, we had limited amount of sq. ft. to work with. Traditional solar panels would have allowed them to install only 17.4 kW or 70% of the customer's electric bill. The Solar Roofing Membranes superior coverage per sq. ft. was the perfect solution. We were able to provide the customer with a 20 year roof warranty along with enough solar panels to cover 100% of their electric bill.

Full Address

Elmwood Park, NJ 07407

Project Start Date August 31st, 2006

Project End Date September 13th, 2006

System Size

25 kW

Estimated Monthly Production

2,720 kWh/month (100% of total building load)

Products Used

Applied Solar Roofing Membranes – SP480

Installation Weight

1.7 lbs. per sq. ft.

Installation Size

2,560 sq. ft.

Roof Type

Flat

